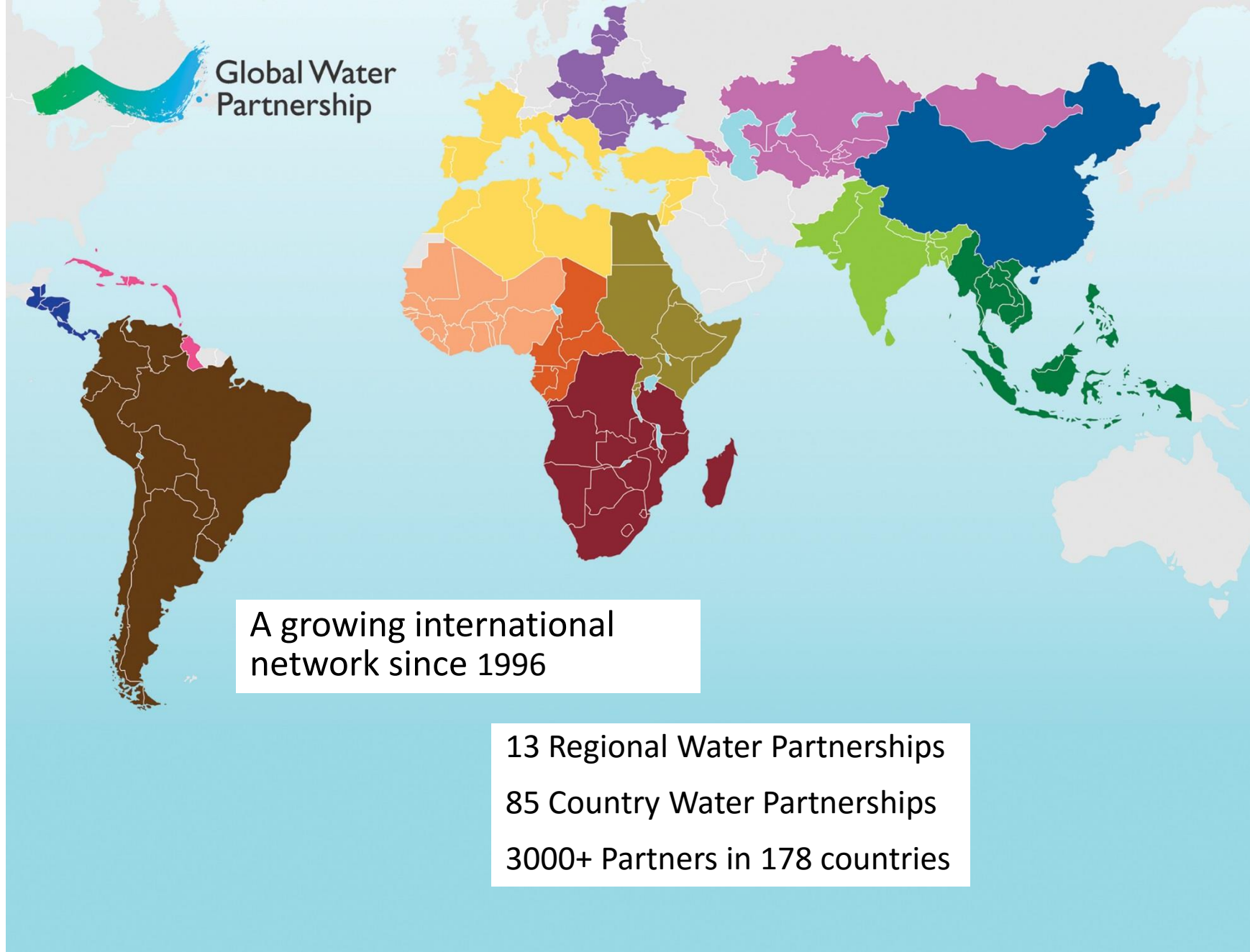


a water secure world

# Introduction to GWP Monitoring & Evaluation (M&E)

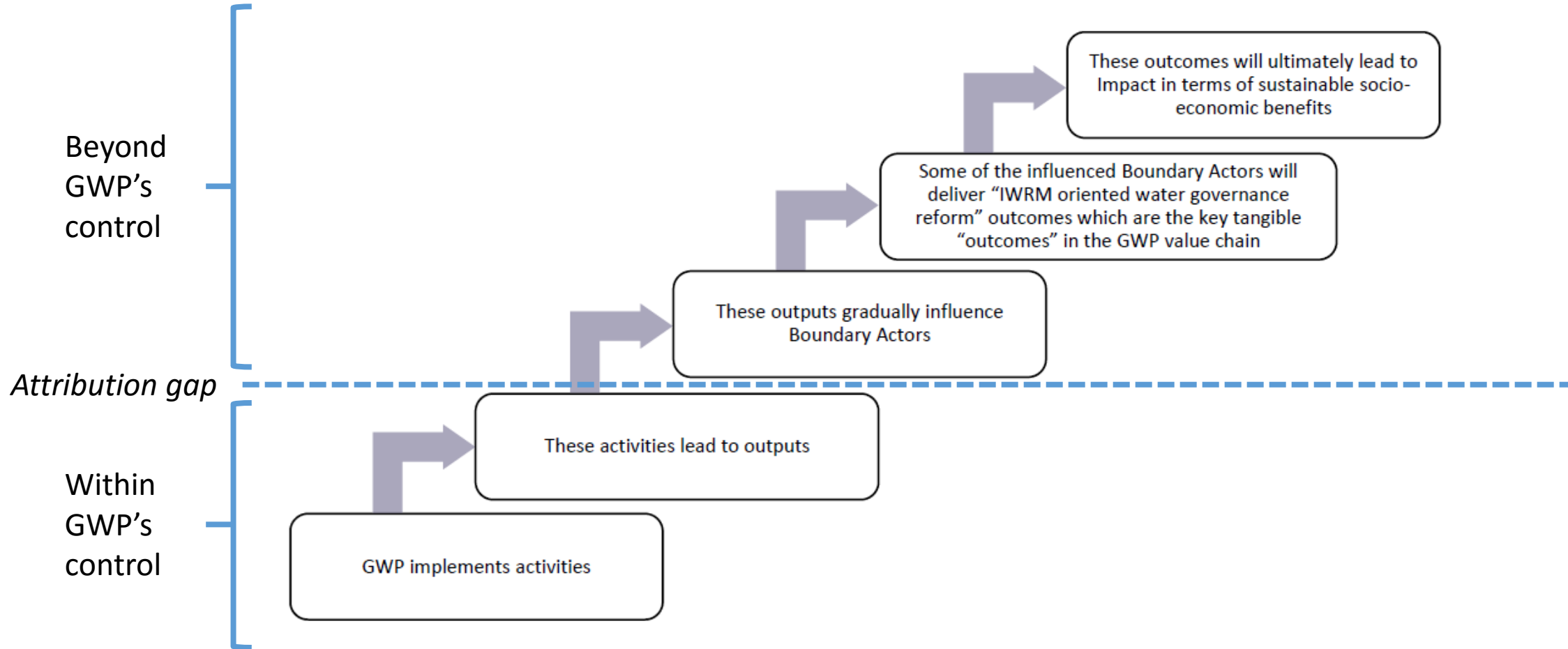
Ralph Philip, M&E Officer GWPO  
19 May 2016



# Objectives of GWP M&E

- To monitor progress towards the implementation of the overall GWP Work Programme
- To strengthen organisational planning and programme design
- To identify and better understand the *plausible linkages* between GWP's work and the desired outcomes and impact across an *attribution gap*
- To promote GWP's achievements
- To demonstrate value for money to funding partners

# The GWP results chain



# GWP's M&E framework

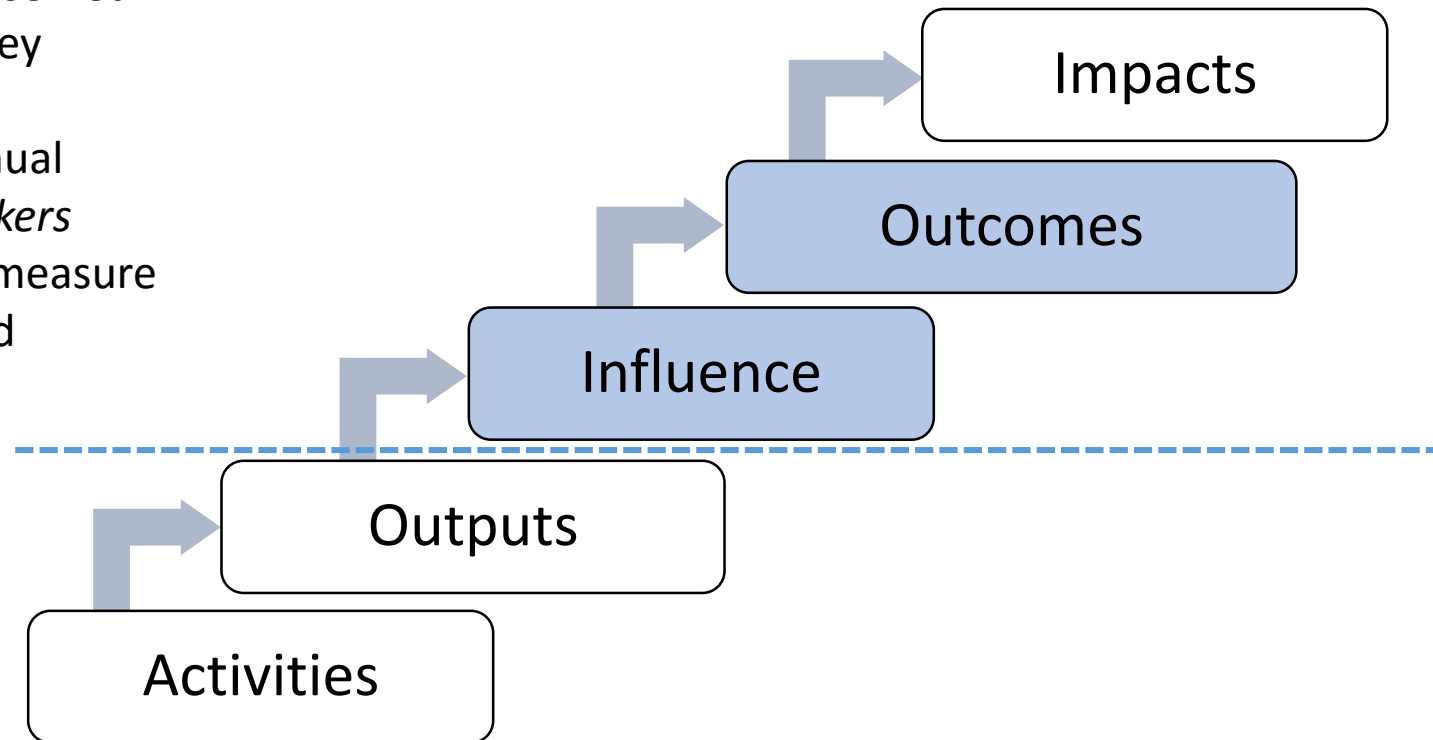
A hybrid of two methodologies:

1. *Qualitative outcome mapping*
2. *Quantitative results-based M&E component (logical framework)*

The combination of methodologies enables GWP to set, and measure progress towards, quantified targets whilst also analyzing progress based on observed changes in the behavior of boundary actors and water governance

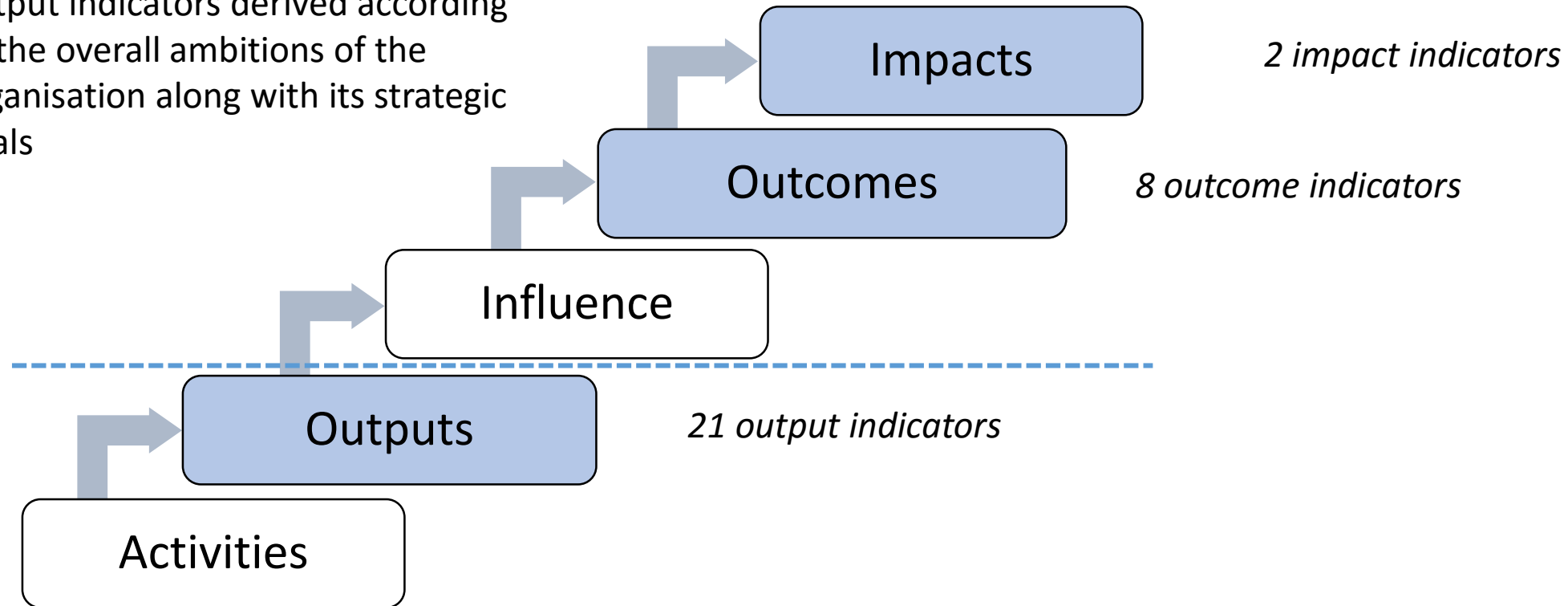
# M&E framework – Outcome mapping

Qualitative monitoring of observed changes in the behavior of key boundary actors and water governance through the annual assessment of *progress markers* (predefined goal posts that measure progress towards the desired change)



# M&E framework – Results-based

Quantitative monitoring of progress towards logframe targets set against a series of impact, outcome and output indicators derived according to the overall ambitions of the organisation along with its strategic goals



# Reporting

Reports are submitted by all GWP entities according to the following schedule:

Monthly reports – *Comprehensive record of implemented activities and outputs as well as the manifestation of outcome and impact level results*

Quarterly reports – *Critical assessment of progress in the context of financial expenditure*

Annual report – *Critical assessment of achievements as compared to plans for the year and updated results framework scores*

# Corporate M&E reports

- Monthly and quarterly M&E briefs
- GWP Annual Progress Review
- GWP Annual Report
- GWP impact stories
- Strategic assessments (e.g. the 2009-2013 Strategy internal assessment)



# Challenges

- Reporting results across an attribution gap
- Capturing all results
- Lack of capacity/time within the network to produce M&E reports to the necessary standard
- Ensuring that the M&E system in place is utilised to its full potential as a learning mechanism
- Quantifying impact



Thank you