

# GROUND FLOOR LEVEL

Symbol	Legend
	Second Class Water Pipework
	Second Class Water Pipework to Roof
	Angle Valve
	Turn Ball Valve
	Bibtap

- Notes:**
- The exact location of plumbing points/angle valves should be coordinated with the architect's furniture layout and sanitary ware details
  - The location of the pipework in the service shafts are to be coordinated with other services.
  - All main runs until entry point in bathrooms shall be of the PPR type.
  - Final connections/pipework chased in wall to angle valves from main runs are to be of the PPR type.
  - All Dimensions shown on plan are internal diameters.
  - This drawing is to be read with the project specifications and all other contract documentation.
  - Drawings are conceptual and for the use of tender purposes only. Do not scale from the drawing.

REV.	DESCRIPTION	BY	DATE
.00	ORIGINAL PROPOSAL _ ISSUED FOR FEEDBACK	DX	08.12.23
.01	INC. OF BIBTAPS	DX	29.02.24
.02	ADDITION OF BIBTAPS AT EACH LEVEL	DX	05.03.24
.03	QTY. 2 : 1000 LTR TANKS AS PER ARCH REQ	DX	01.05.24

TITLE: SCW TENDER DRAWING			
PROJECT: SECOND CLASS WATER SYSTEM ST. JOSEPH JUNIOR SCHOOL SLIEMA			
SITE: ST. JOSEPH SCHOOL, 5, TRIQ IL-KATIDRAL, SLIEMA			
DATE: 29/02/2024	SCALE: 1 : 200	PAPER: A3	DRAWING NO
APPROVED: DX	SHEET: 2 / 7		24 - 29.02



# FIRST FLOOR LEVEL

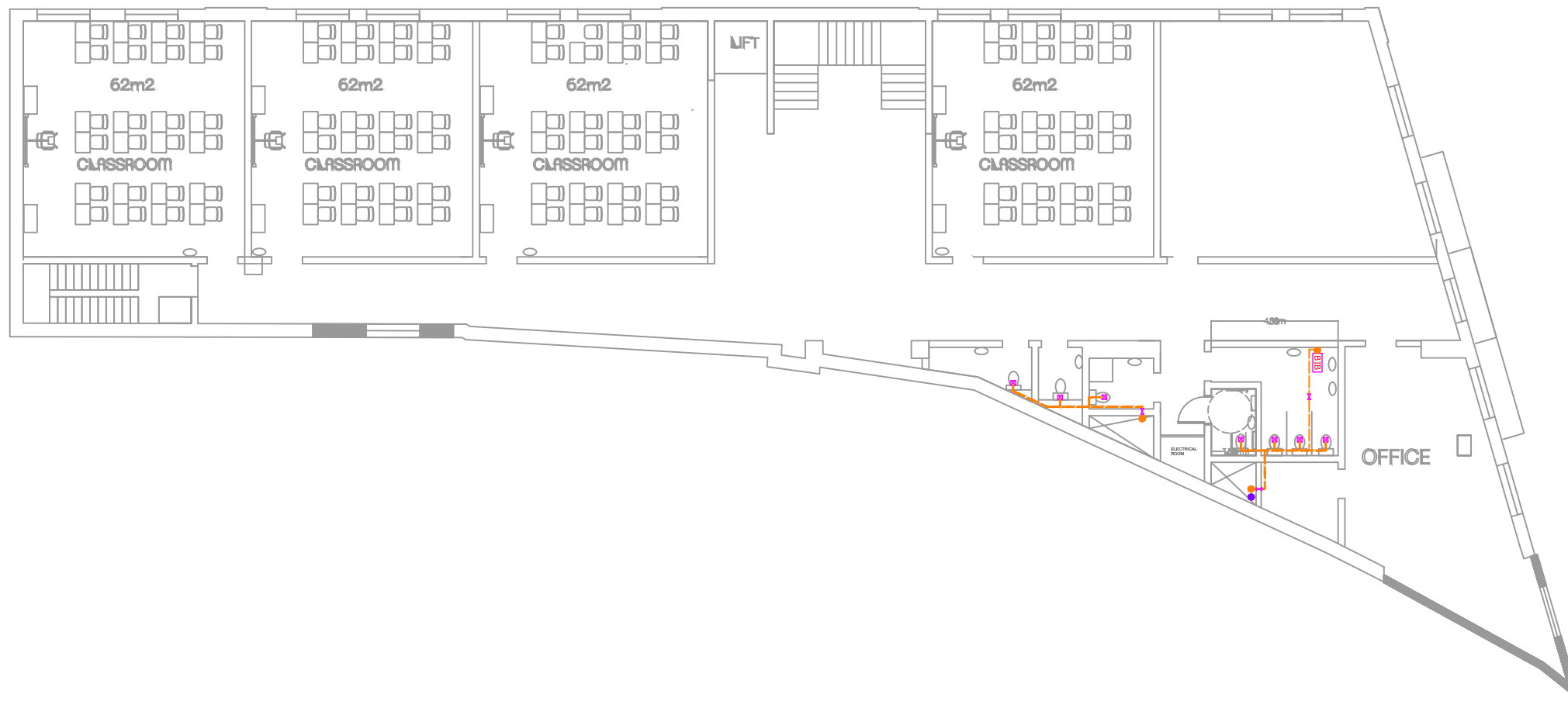
Symbol	Legend
	Second Class Water Pipework
	Second Class Water Pipework to Roof
	Angle Valve
	Turn Ball Valve
	Bibtap

- Notes:**
- The exact location of plumbing points/angle valves should be coordinated with the architect's furniture layout and sanitary ware details.
  - The location of the pipework in the service shafts are to be coordinated with other services.
  - All main runs until entry point in bathrooms shall be of the PPR type.
  - Final connections/pipework chased in wall to angle valves from main runs are to be of the PPR type.
  - All Dimensions shown on plan are internal diameters.
  - This drawing is to be read with the project specifications and all other contract documentation.
  - Drawings are conceptual and for the use of tender purposes only. Do not scale from the drawing.

REV.	DESCRIPTION	BY	DATE
.00	ORIGINAL PROPOSAL _ ISSUED FOR FEEDBACK	DX	08.12.23
.01	INC. OF BIBTAPS	DX	29.02.24
.02	ADDITION OF BIBTAPS AT EACH LEVEL	DX	05.03.24
.03	QTY. 2 : 1000 LTR TANKS AS PER ARCH REQ	DX	01.05.24

TITLE: SCW TENDER DRAWING			
PROJECT: SECOND CLASS WATER SYSTEM ST. JOSEPH JUNIOR SCHOOL SLIEMA			
SITE: ST. JOSEPH SCHOOL, 5, TRIQ IL-KATIDRAL, SLIEMA			
DATE: 29/02/2024	SCALE: 1 : 200	PAPER: A3	DRAWING NO
APPROVED: DX	SHEET: 3 / 7	24 - 29.02	





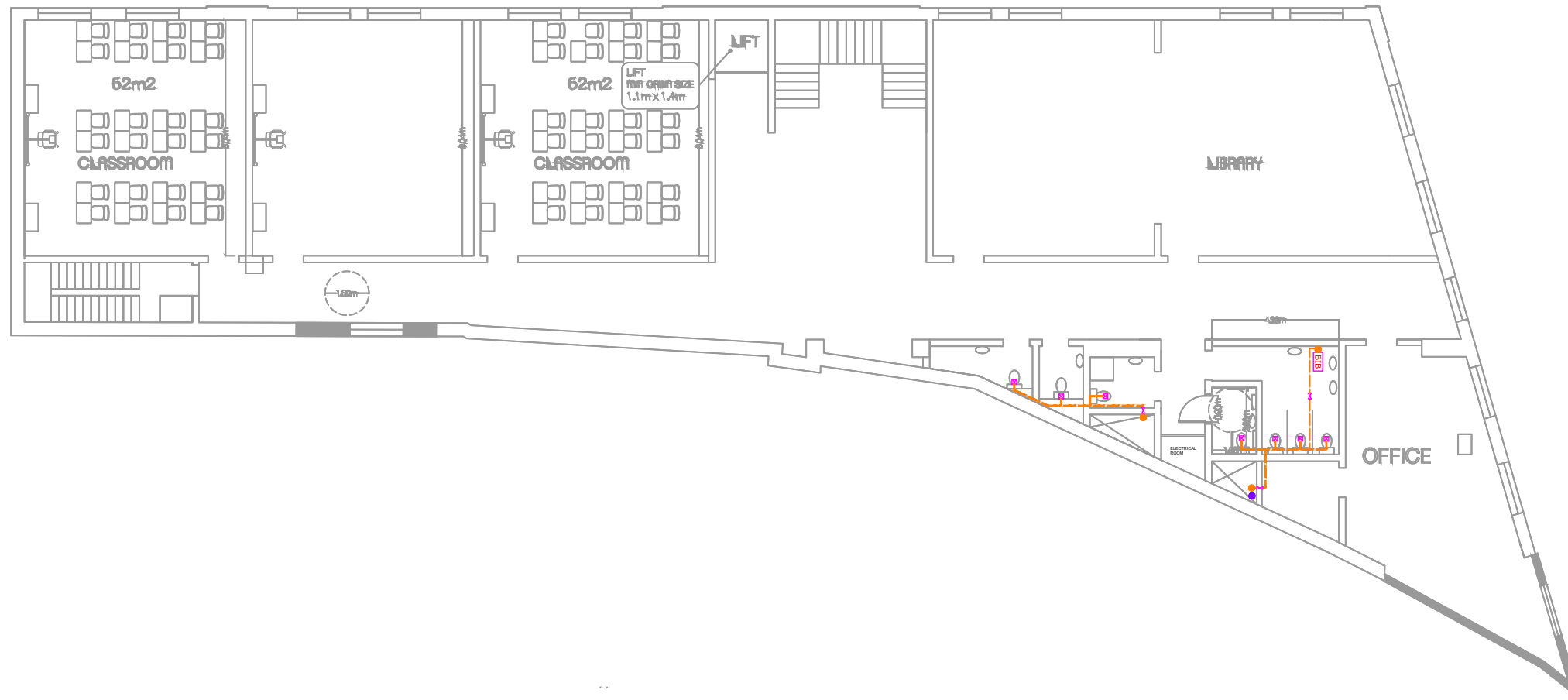
# THIRD FLOOR LEVEL

Symbol	Legend
	Second Class Water Pipework
	Second Class Water Pipework to Roof
	Angle Valve
	Turn Ball Valve
	Bibtap

- Notes:**
- The exact location of plumbing points/angle valves should be coordinated with the architect's furniture layout and sanitary ware details.
  - The location of the pipework in the service shafts are to be coordinated with other services.
  - All main runs until entry point in bathrooms shall be of the PPR type.
  - Final connections/pipework chased in wall to angle valves from main runs are to be of the PPR type.
  - All Dimensions shown on plan are internal diameters.
  - This drawing is to be read with the project specifications and all other contract documentation.
  - Drawings are conceptual and for the use of tender purposes only. Do not scale from the drawing.

REV.	DESCRIPTION	BY	DATE
.00	ORIGINAL PROPOSAL _ ISSUED FOR FEEDBACK	DX	08.12.23
.01	INC. OF BIBTAPS	DX	29.02.24
.02	ADDITION OF BIBTAPS AT EACH LEVEL	DX	05.03.24
.03	QTY. 2 : 1000 LTR TANKS AS PER ARCH REQ	DX	01.05.24

TITLE: SCW TENDER DRAWING			
PROJECT: SECOND CLASS WATER SYSTEM ST. JOSEPH JUNIOR SCHOOL SLIEMA			
SITE: ST. JOSEPH SCHOOL, 5, TRIQ IL-KATIDRAL, SLIEMA			
DATE: 29/02/2024	SCALE: 1 : 200	PAPER: A3	DRAWING NO
APPROVED: DX	SHEET: 5 / 7	24 - 29.02	



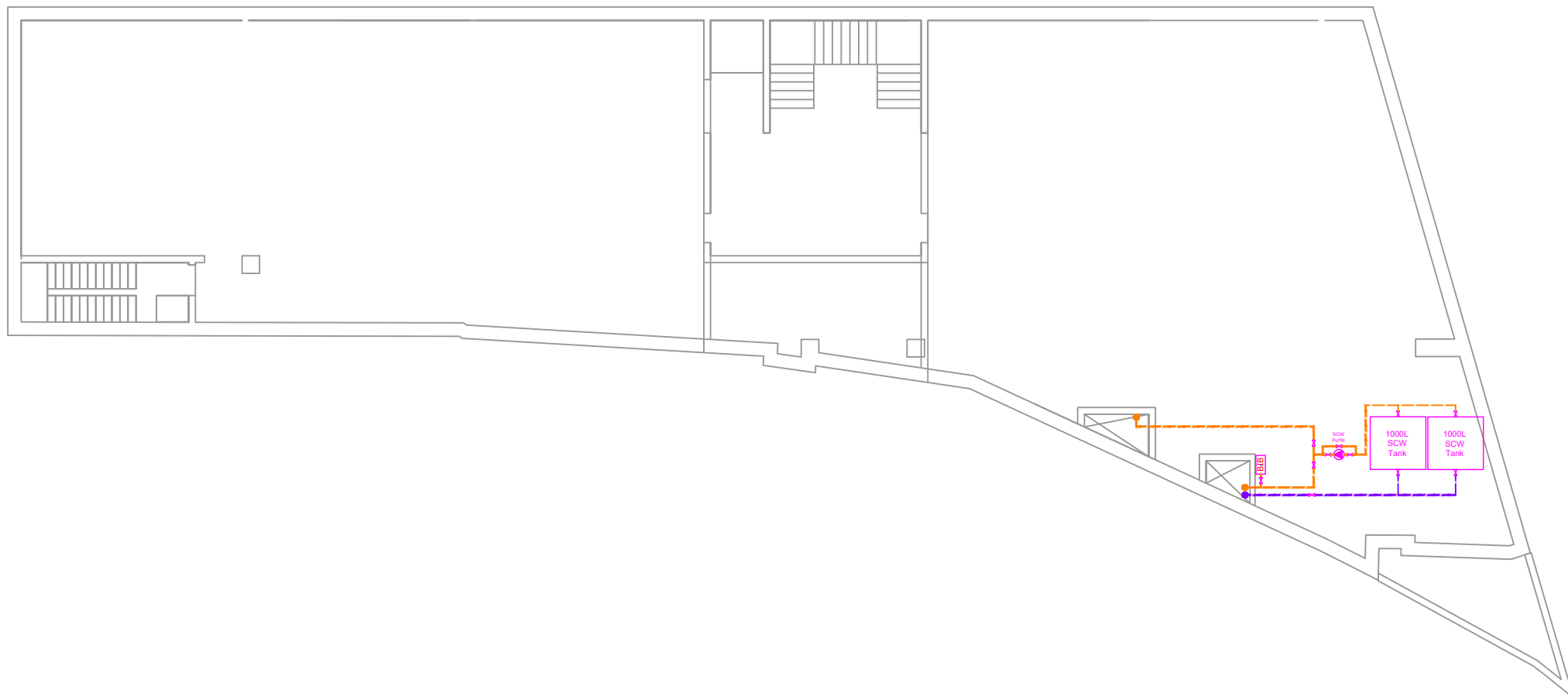
# FOURTH LEVEL

Symbol	Legend
	Second Class Water Pipework
	Second Class Water Pipework to Roof
	Angle Valve
	Turn Ball Valve
	Bibtap

- Notes:**
- The exact location of plumbing points/angle valves should be coordinated with the architect's furniture layout and sanitary ware details
  - The location of the pipework in the service shafts are to be coordinated with other services.
  - All main runs until entry point in bathrooms shall be of the PPR type.
  - Final connections/pipework chased in wall to angle valves from main runs are to be of the PPR type.
  - All Dimensions shown on plan are internal diameters.
  - This drawing is to be read with the project specifications and all other contract documentation.
  - Drawings are conceptual and for the use of tender purposes only. Do not scale from the drawing.

REV.	DESCRIPTION	BY	DATE
.00	ORIGINAL PROPOSAL _ ISSUED FOR FEEDBACK	DX	08.12.23
.01	INC. OF BIBTAPS	DX	29.02.24
.02	ADDITION OF BIBTAPS AT EACH LEVEL	DX	05.03.24
.03	QTY.2 : 1000 LTR TANKS AS PER ARCH REQ	DX	01.05.24

TITLE: SCW TENDER DRAWING			
PROJECT: SECOND CLASS WATER SYSTEM ST. JOSEPH JUNIOR SCHOOL SLIEMA			
SITE: ST. JOSEPH SCHOOL, 5, TRIQ IL-KATIDRAL, SLIEMA			
DATE: 29/02/2024	SCALE: 1 : 200	PAPER: A3	DRAWING NO
APPROVED: DX	SHEET: 6 / 7	24 - 29.02	



ROOF LEVEL

Symbol	Legend
	Second Class Water Pipework
	Second Class Water Pipework to Roof
	Angle Valve
	Turn Ball Valve
	Bibtap

- Notes:**
- The exact location of plumbing points/angle valves should be coordinated with the architect's furniture layout and sanitary ware details
  - The location of the pipework in the service shafts are to be coordinated with other services.
  - All main runs until entry point in bathrooms shall be of the PPR type.
  - Final connections/pipework chased in wall to angle valves from main runs are to be of the PPR type.
  - All Dimensions shown on plan are internal diameters.
  - This drawing is to be read with the project specifications and all other contract documentation.
  - Drawings are conceptual and for the use of tender purposes only. Do not scale from the drawing.

REV.	DESCRIPTION	BY	DATE
.00	ORIGINAL PROPOSAL _ ISSUED FOR FEEDBACK	DX	08.12.23
.01	INC. OF BIBTAPS	DX	29.02.24
.02	ADDITION OF BIBTAPS AT EACH LEVEL	DX	05.03.24
.03	QTY.2 : 1000 LTR TANKS AS PER ARCH REQ	DX	01.05.24

TITLE: SCW TENDER DRAWING			
PROJECT: SECOND CLASS WATER SYSTEM ST. JOSEPH JUNIOR SCHOOL SLIEMA			
SITE: ST. JOSEPH SCHOOL, 5, TRIQ IL-KATIDRAL, SLIEMA			
DATE: 29/02/2024	SCALE: 1 : 200	PAPER: A3	DRAWING NO
APPROVED: DX	SHEET: 7 / 7	24 - 29.02	