



WEFE Nexus Science to Policy: Bridging the Gap for Sustainable Development

Prof. Ali RHOUMA
Project Officer



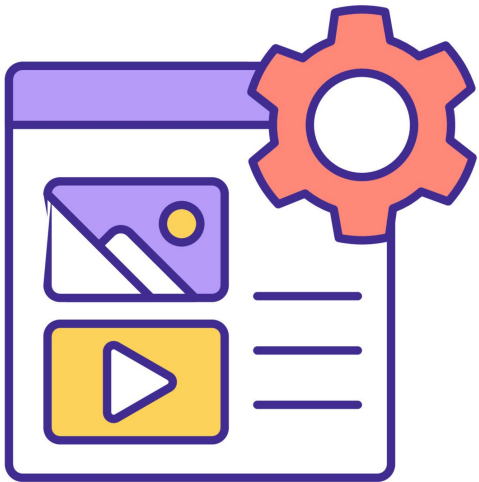
PRIMA
PARTNERSHIP FOR RESEARCH AND INNOVATION
IN THE MEDITERRANEAN AREA



PRIMA is supported under Horizon 2020,
the European Union's Framework
Programme
for Research and Innovation

Rabat, Morocco
6 June 2023

Content



Science advances in WEF E Nexus

Challenges in translating WEF E Nexus Science to policies

Insights from PRIMA Funded Projects

Conclusion

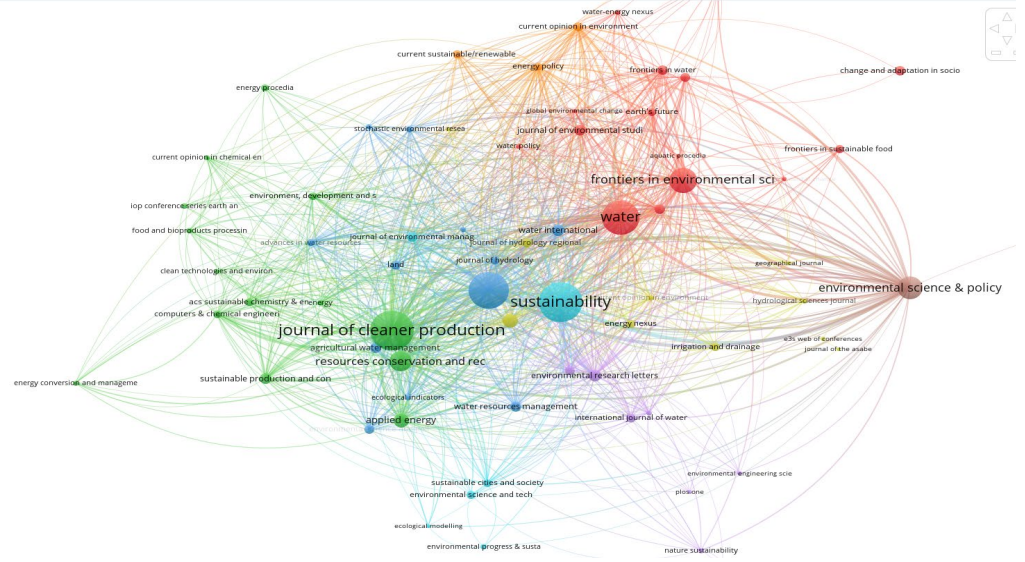
WEFE Nexus has had Strong policy and societal underpinnings



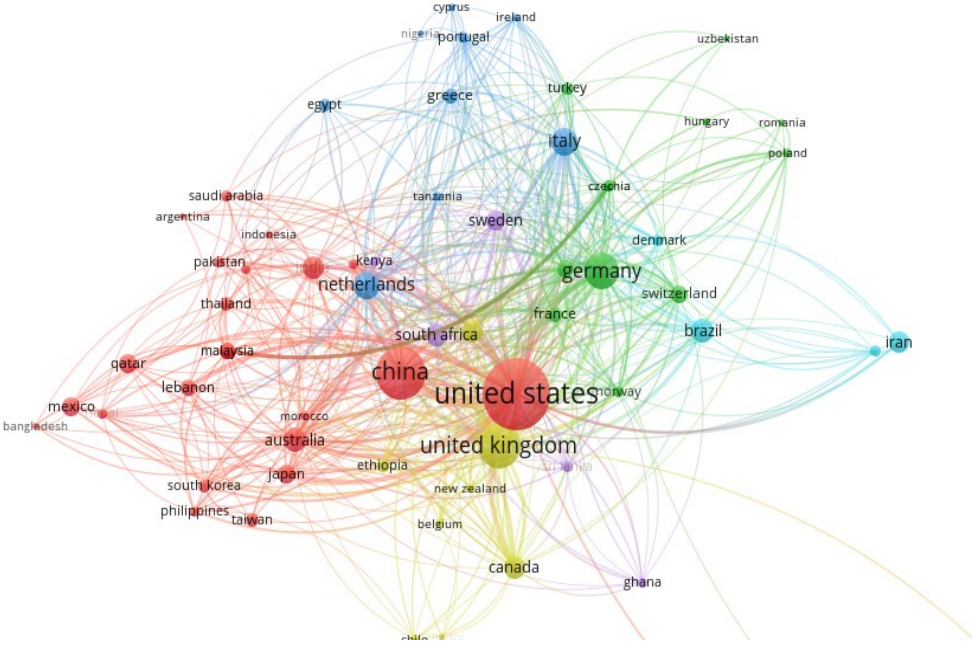
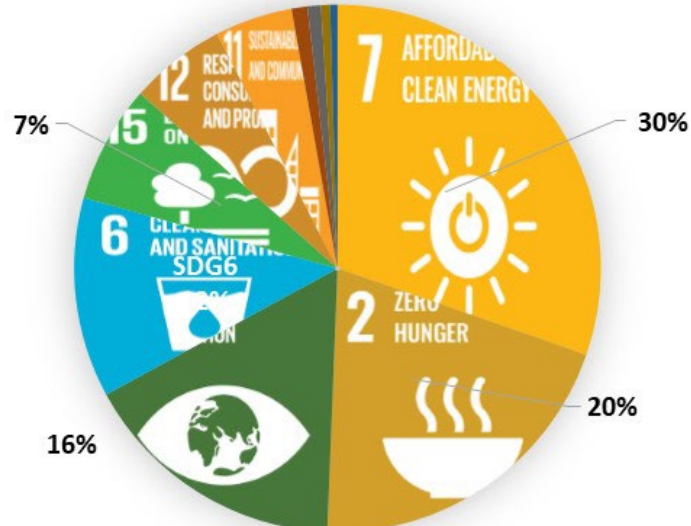
Strongly advocate for integrative frameworks that address the interlinked causes of WEF security

WEFE Nexus Science advances and creates knowledge

> 2700 documents
70% Articles

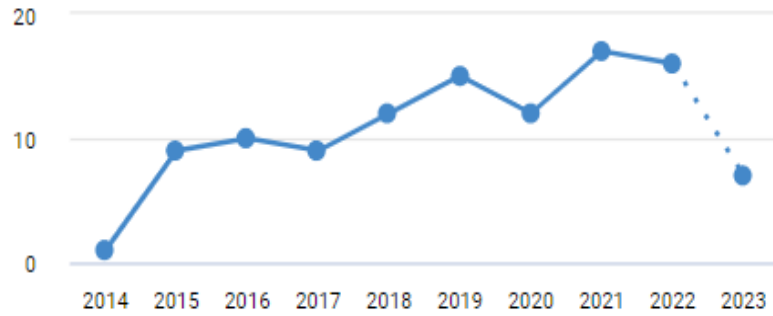


182 Governance and Polices



Interface WEF Nexus Science and Policy

109 documents



Renewable energy technologies



Renewable Energy Policies

Modeling



Evidence based decision making

Agricultural practices



Sustainable Agriculture and Food Security Policies:

Scientific research on climate Change

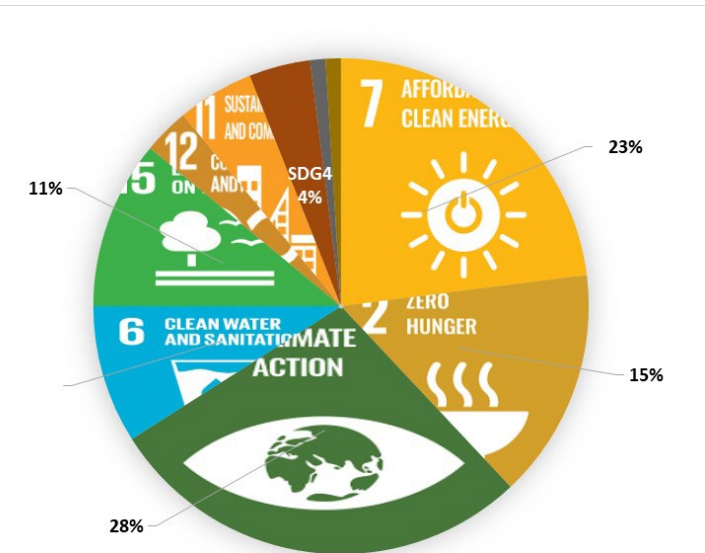


Climate Change Adaptation and Resilience Policies

Scientific research on ecosystem services

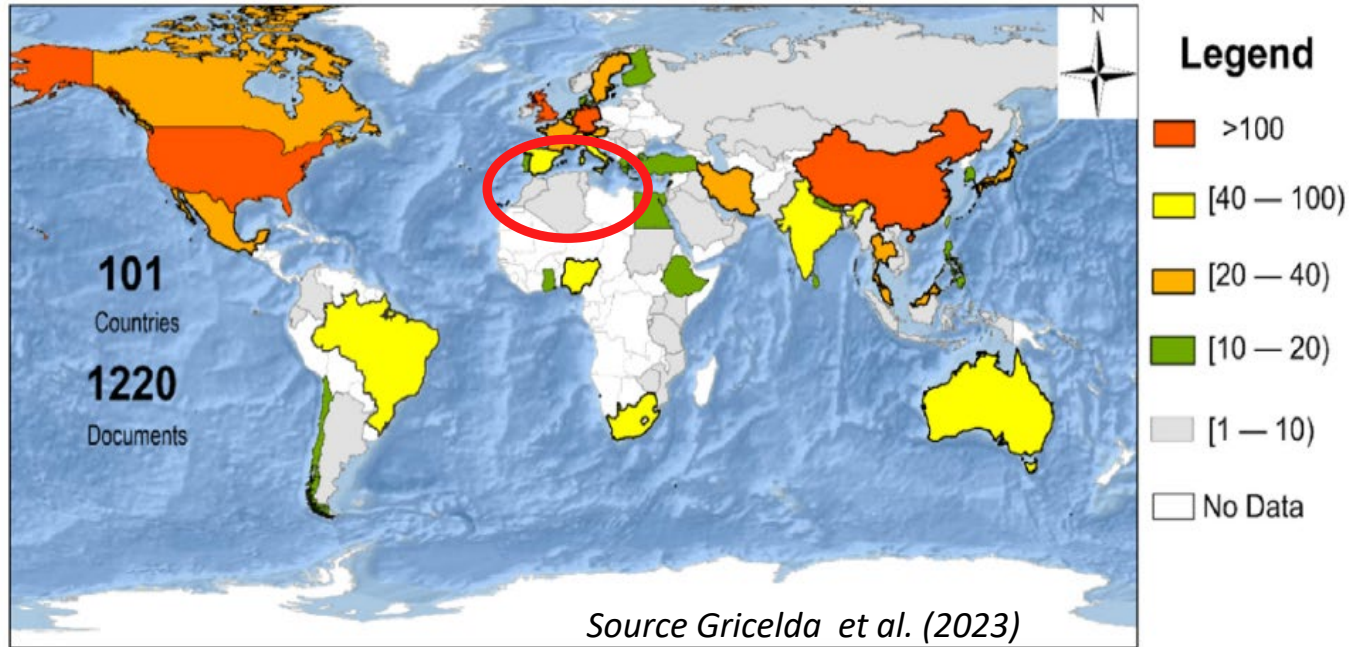


Ecosystem-based policies



WEFE Nexus Science and Climate Change

Articles Nexus WEFE+Climate Change



Weak integration of WEFE

- Nationally Determined Contributions (NDCs)
- National Adaptations Plans

Maladaptation



12 Indicators (24 countries)

- Food security
- Water Management

Monitoring tool for decision making on WEFE in the Med. region

Study is a great support to for decision makers

WEFE Nexus science can inform and support circular economy policies



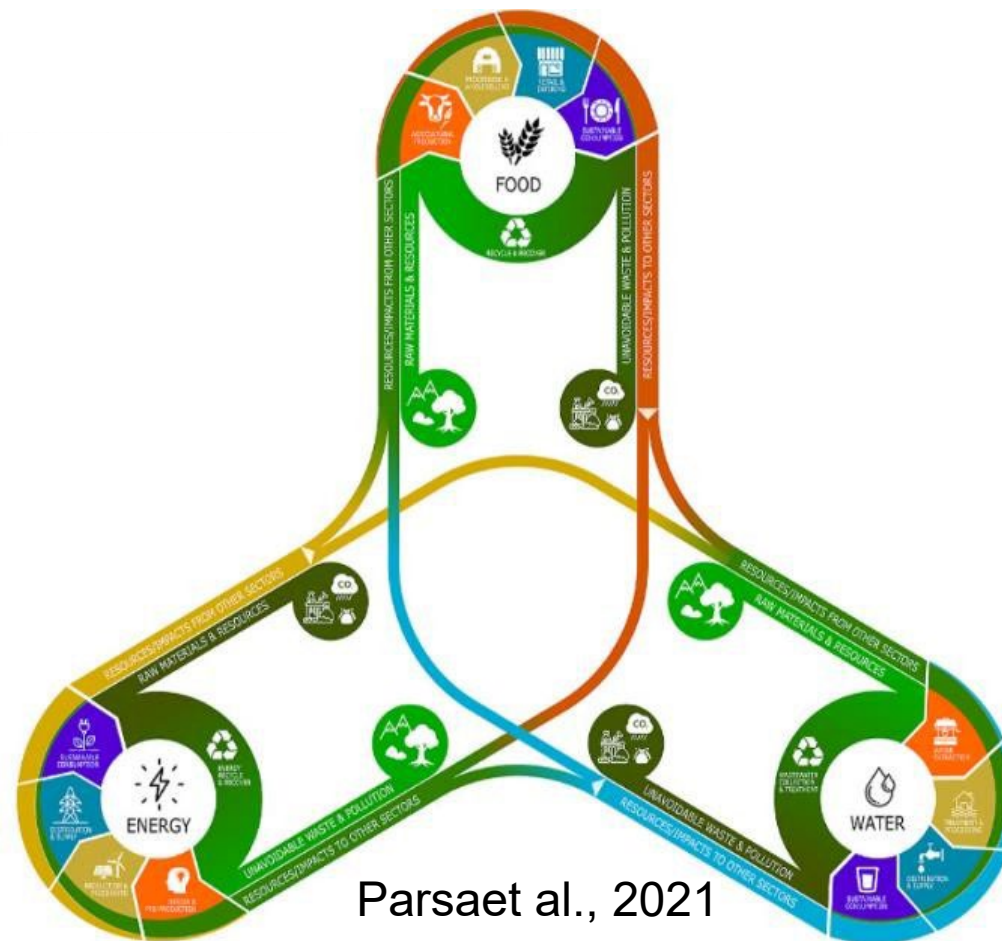
☐ Resources efficiency



☐ Innovation and technologies: Waste management/Valorisation

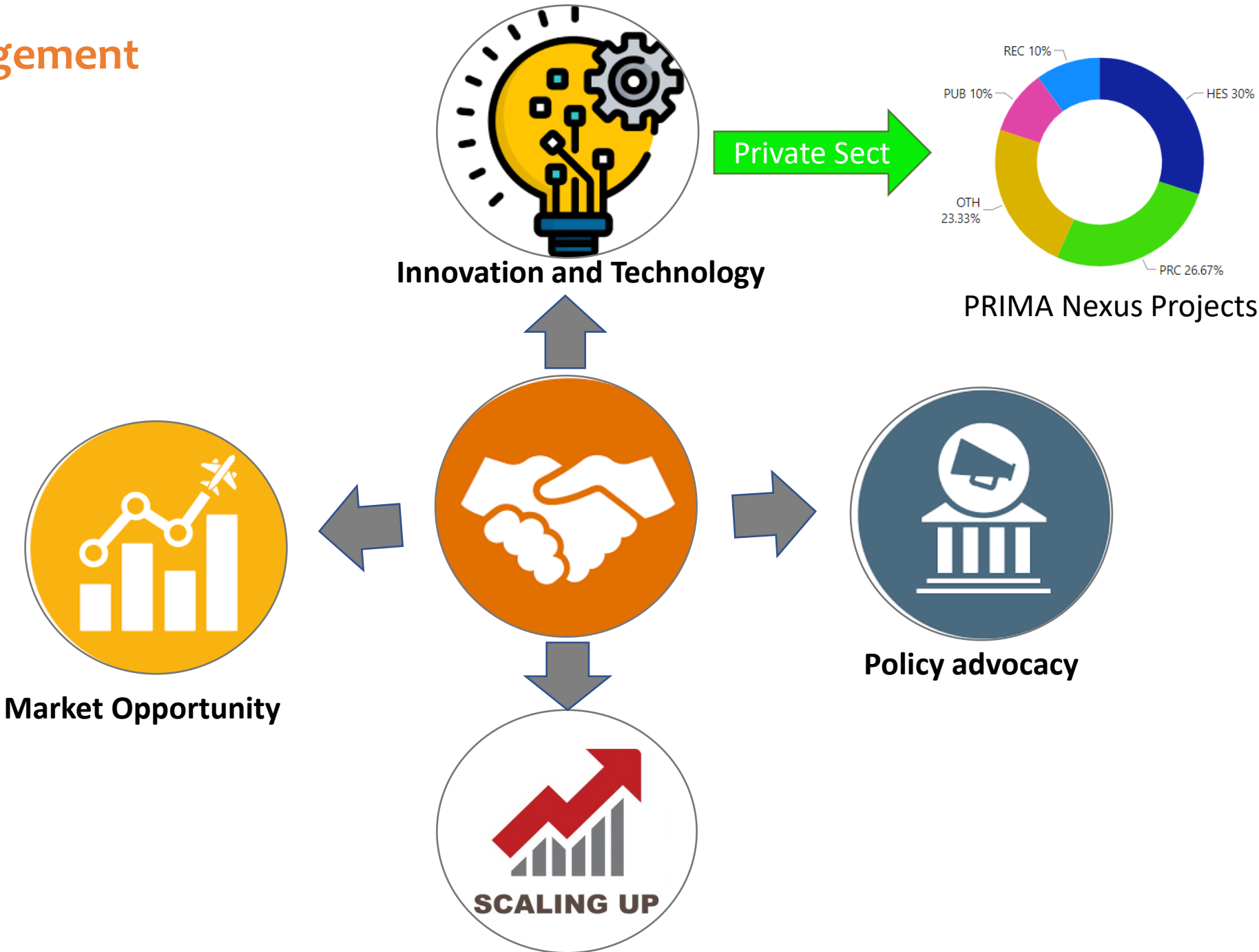


☐ Policy Integration and Governance

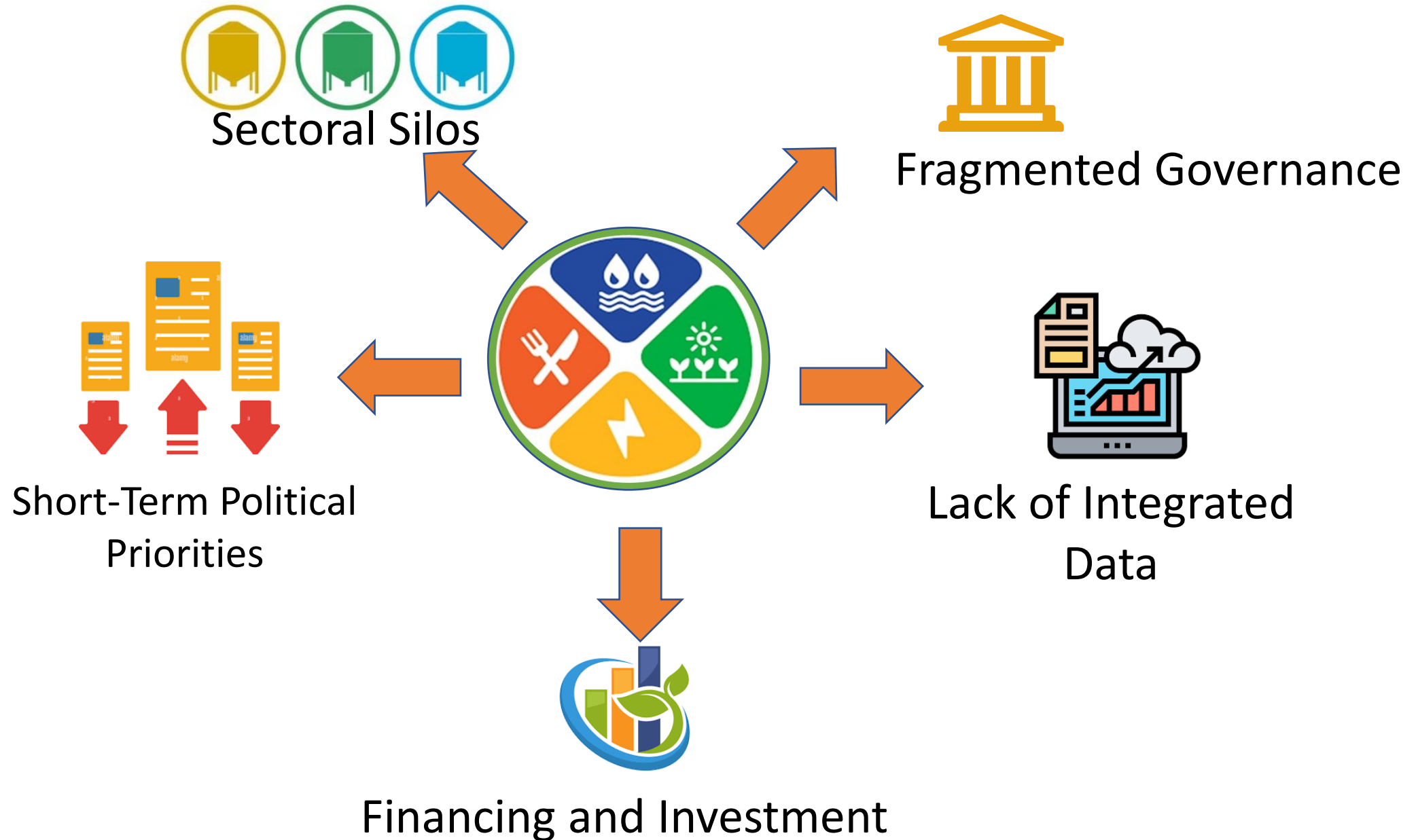


Parsaet al., 2021

Private sector engagement in WEFE Nexus



Challenges in translating WEF E Nexus Science to policies



Possible measures for bridging WEF Nexus Science to policies



Nexus in Action: PRIMA's Strategy for Moving from Nexus Thinking to Nexus Doing

- ❖ Importance of transitioning from theoretical understanding to practical implementation



NEXUS CONCEPT



PRACTICE

- ❖ PRIMA Programme relevance to the WEF Nexus, in particular taking into account the Environment sector aligning with EU Green Deal and the UfM Environment Ministerial Declaration deliverable [2030 GreenerMed Agenda](#).
- ❖ Social-ecological systems
- ❖ Health Component (Water Quality)



PRIMA WEFE Nexus solutions



Water Efficient technologies



Renewable Energy Integration



Desalination Technologies



Agriculture Practices



Circular Economy



Nexus WEFE Modeling



Stakeholder Engagement and Governance



NB. PARTNERS
113

NB. Projects
10



BUDGET (M€)
26.17M



PRIMA's Contributions to WEF E Nexus Doing

>30 Demonstration sites

- Technical and Engineering solutions
- Nature based solutions
- Governance solutions

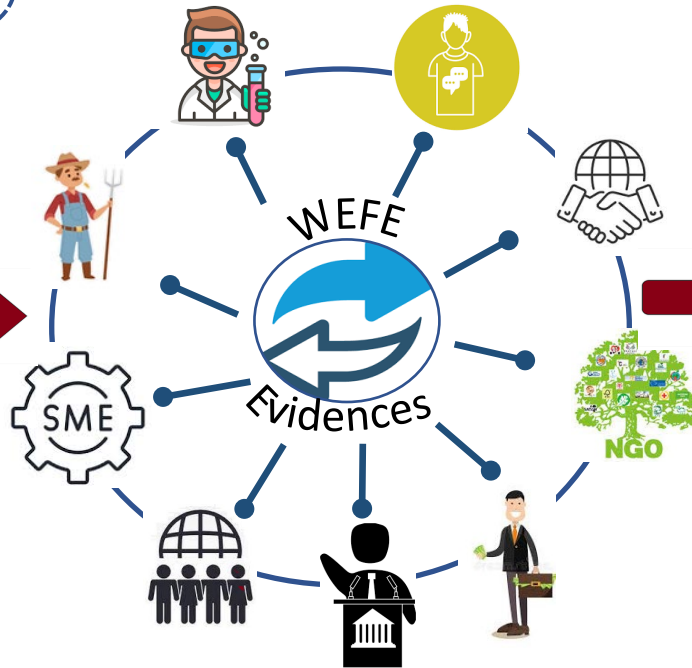


Nexus Community of Practice

[2021 WEFE Nexus Science Advances Conference](#) highlighted the need for a Mediterranean WEFE Nexus Community of Practice (NCoP)



Gather stakeholders



Develop



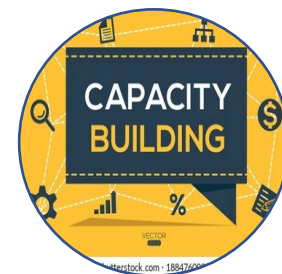
Propose



Engage



Capacity building



Support Implementation Nexus WEFE

Synergies with other established platforms
(As an Example the Sustainable Food Systems Multi-Stakeholder platform)

Conclusion

- ❖ The link between the WEF E Nexus and policy-making remains weak (Involvement of policy-makers in research design)
- ❖ Large scale demonstrators implemented by PRIMA projects
Could help governments to shape/integrate policies
- ❖ A Nexus WEF E community of practices could be become a powerhouse of sustainable solutions, fueling the transition to a green economy and paving the way for the achievement of SDGs
- ❖ By integrating the WEF E Nexus approach within policies, governments can promote sustainable and resilient development

Ali RHOUMA

Project Officer- PRIMA Foundation

ali.rhouma@prima-med.org



PRIMA

PARTNERSHIP FOR RESEARCH AND INNOVATION
IN THE MEDITERRANEAN AREA

Thank you



PrimaProgram



@PRIMAProgram



Prima Program



Prima-med YouTube





The SIMTAP prototype at UNIPI (Pisa, Turkey). The greenhouse of the prototype (top) and a general view of the aquaponic system (bottom),