

# WEFE Nexus considerations in ICZM planning and climate resilience strategies: MedProgramme Child Project 2.1 and SCCF

By:  
Željka Škaričić, PAP/RAC Director



**Mediterranean  
Action Plan**  
Barcelona  
Convention



# Definition of ICZM

*ICZM means a **dynamic process** for the **sustainable management and use** of coastal zones, taking into account at the same time the **fragility of coastal ecosystems and landscapes**, the **diversity of activities and uses**, their interactions, the **maritime orientation** of certain activities and uses and their impact on both the **marine and land parts**.*

PROTOCOL  
ON INTEGRATED COASTAL  
ZONE MANAGEMENT IN THE  
MEDITERRANEAN

-  
PROTOCOLE  
RELATIF À LA GESTION INTÉGRÉE  
DES ZONES CÔTIÈRES DE LA  
MÉDITERRANÉE

-  
PROTOCOLO  
RELATIVO A LA GESTIÓN  
INTEGRADA DE LAS ZONAS  
COSTERAS DEL MEDITERRÁNEO



United Nations  
Environment Programme



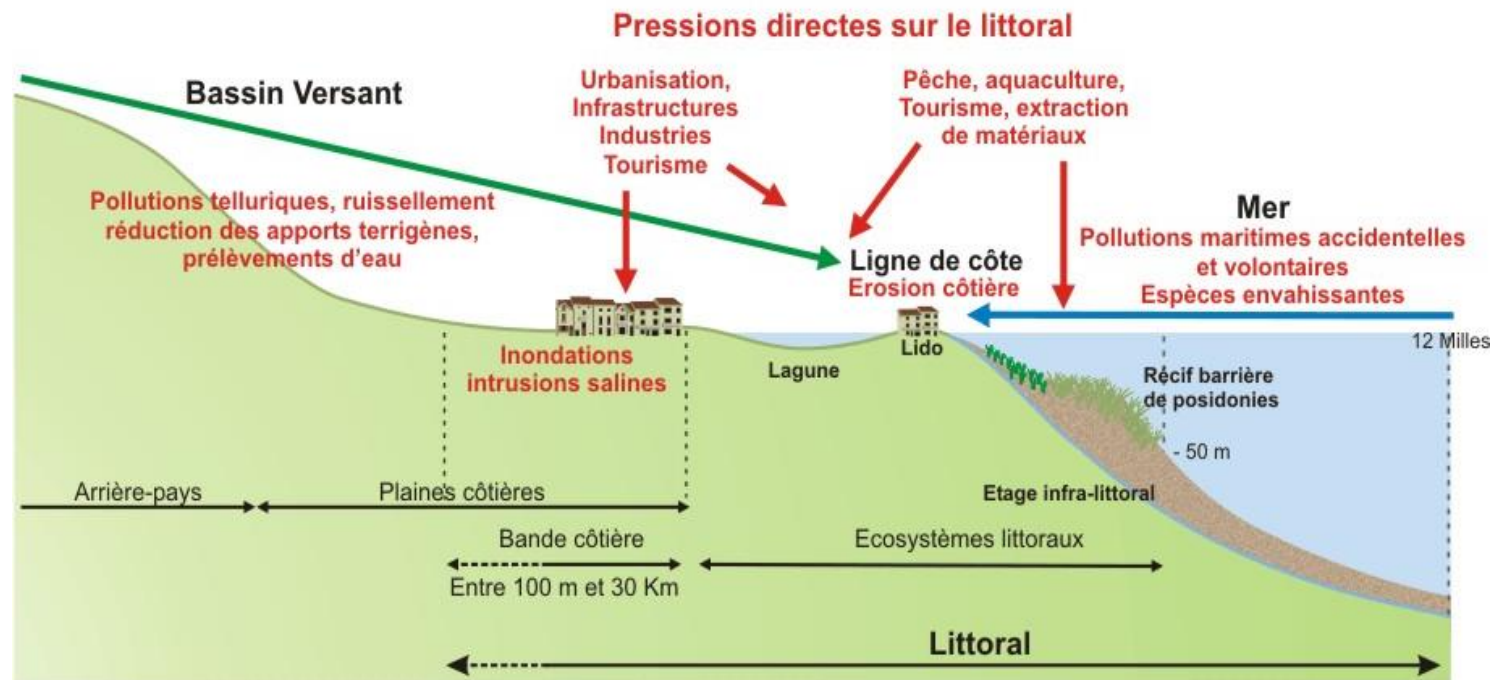
Mediterranean Action Plan



Priority Actions Programme  
Regional Activity Centre

# ICZM =

- Ecosystem-based management to ensure sustainable development and integrity of the coastal zone, its ecosystems and related services and landscapes.
- Address natural hazards and the effects of natural disasters, in particular coastal erosion and climate change.
- Achieve good governance among actors involved in / related to coastal zones.

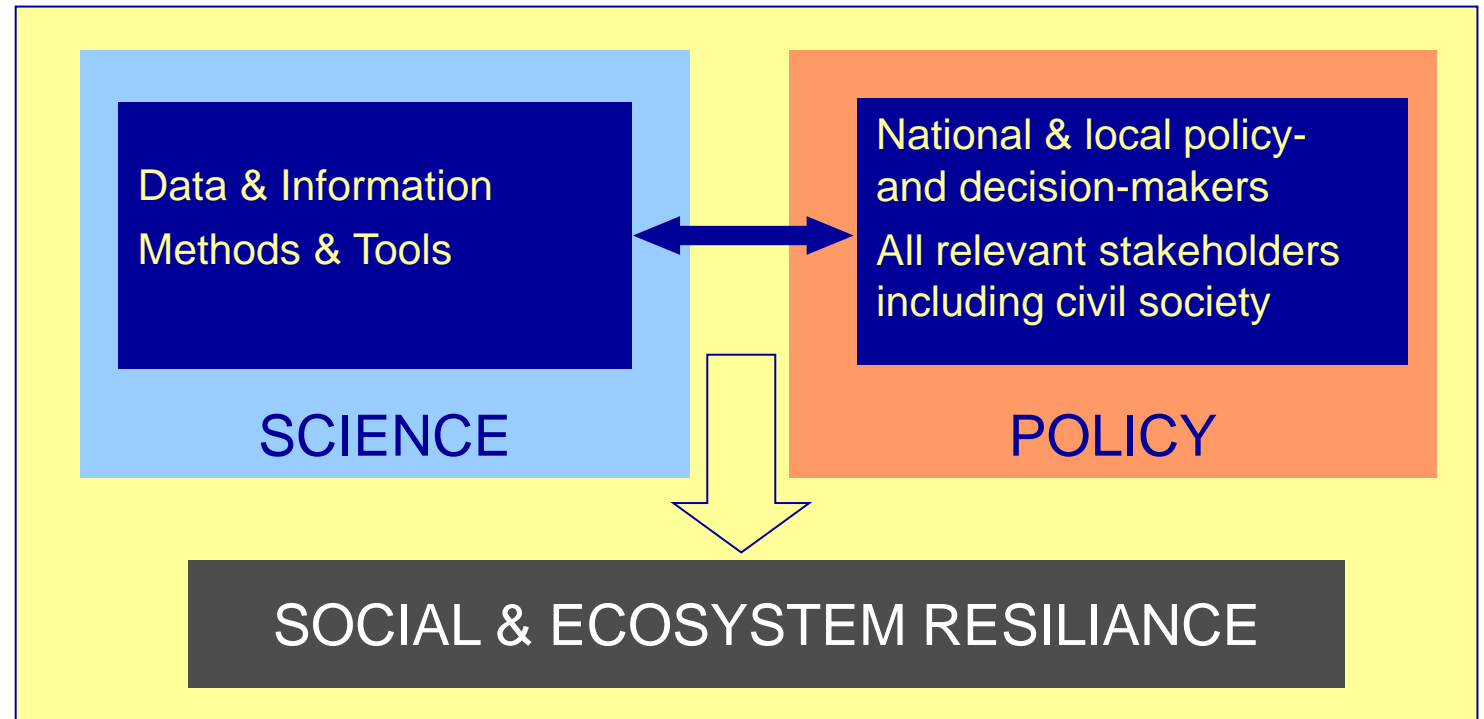


(Source: Plan Bleu, 2005)

# ICZM =

A **process** that is:

- Political & legally-based
- Strategic
- Institutional
- Participatory
- Science-based



# ICZM =

## Adaptive Management

- Situations & conditions
- Relations
- Conflict resolution & compromise

## Integration is the key word:

- Sectoral (horizontal)
- Administrative (vertical)
- Geographical
- Stakeholder involvement
- SPI
- Emerging issues
- ...

## The 3-step "Climagine" process



### Workshop 1

- Understand the context: territorial diagnosis,
- Draw "Rich Pictures" to identify priority issues on the coastal zone,
- Prioritise the issues.

### Workshop 2

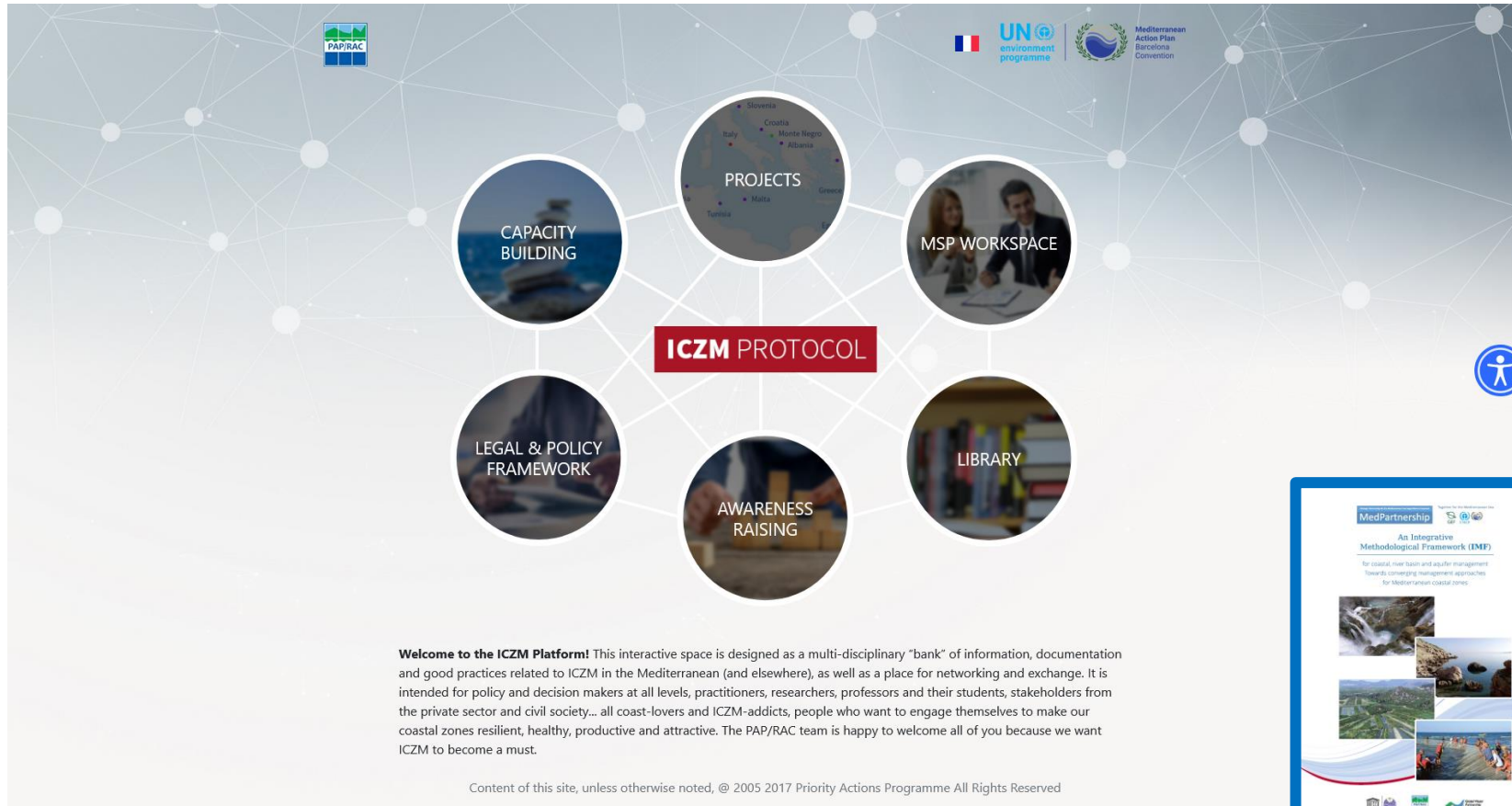
- Select a final core set of indicators related to issues,
- Use matrix to rank issues and indicators,
- Define the indicator's band of equilibrium,
- Define the scenario assumptions.

### Workshop 3

- Explore future through scenarios,
- Present and discuss the results,
- Elaborate of recommendations and setting the priorities for a local ICZM action plan.

By Plan Bleu

# A variety of tools is needed



<https://iczmplatform.org//>

Use our planning tools to help you design and assess the progress of your own MSP taking an ecosystem approach, reviewing land-sea interactions and tackling climate change.

### Mediterranean MSP Planning and Progress Checklist

The Mediterranean MSP Planning and Progress Checklist takes you through the MSP Process, giving you specific actions to adapt to your local context, and set milestones. By using a simple traffic light system the Checklist can also be used as a rapid self-assessment tool; allowing you to measure your own progress, and identify gaps and priorities. The list is not prescriptive or exhaustive, but is here to help you design the process, allocate resources and measure progress. It's based on the [Conceptual Framework](#).



### Ecosystem Approach & MSP Planning Tool

You can break down actions and follow application examples. Complete a short self-assessment of your implementation activity, get a to-do list of specific tasks and identify the barriers you've faced.



### Climate Action & MSP Planning Tool

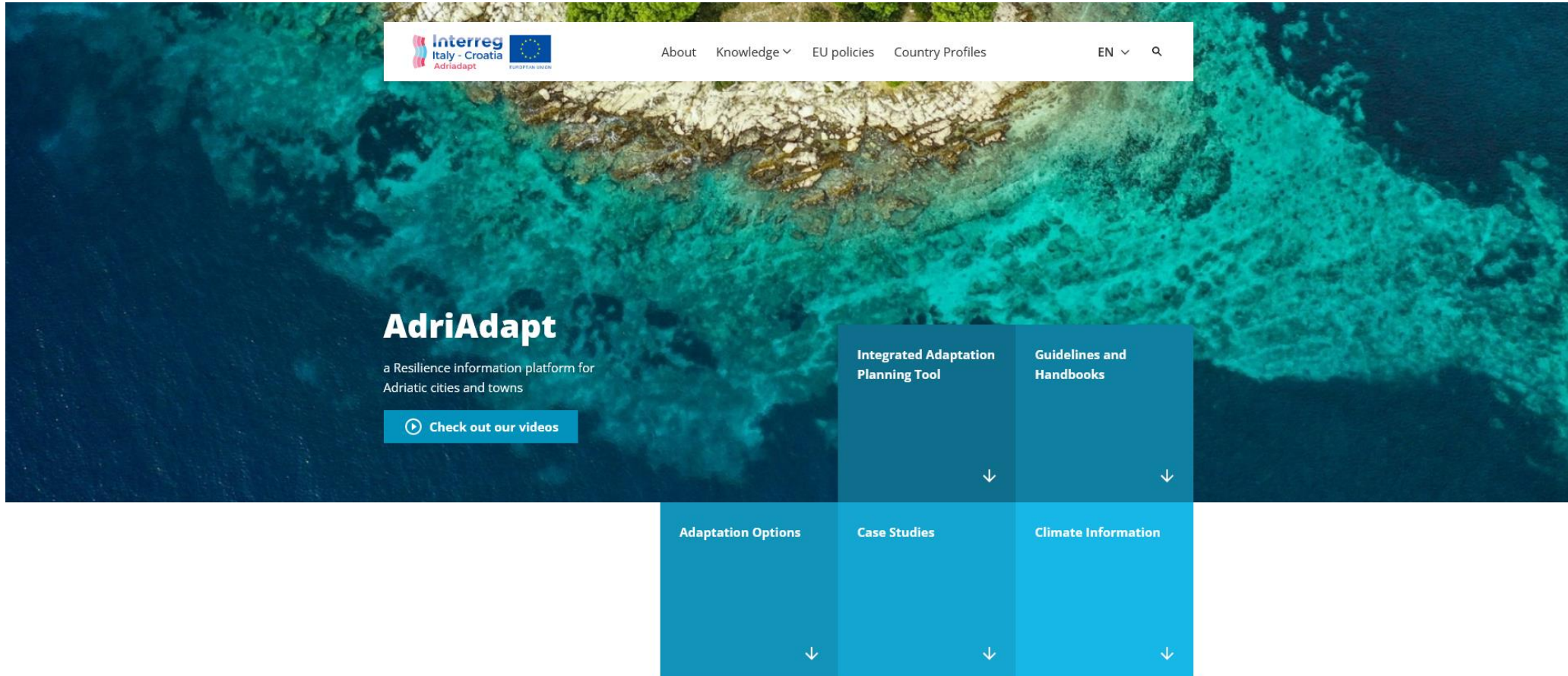
Use this tool to support climate change action within your planning. We've included examples for different sectors to inspire you to take specific action using local knowledge and actors in your region.



### Land-Sea Interactions & MSP Planning Tool

Use our excel-based tool to support LSI analysis. The tool has been created based on the LSI methodological guidelines developed by PAP/RAC within SUPREME and SIMWESTMED projects.





<https://adriadapt.eu/>



# Together in and with Lebanon

## Child 2.1 Activities in Lebanon: PAP/RAC

|  |   |
|--|---|
| Preparation of National ICZM Strategy                                    | PAP/RAC with Plan Bleu and other partners                                   |
| Analysis of impacts of the ICZM Protocol ratification                    | PAP/RAC   |
| Analysis of EcAp CCI on land-use change                                  | PAP/RAC   |
| Establishment of Inter-Ministerial Coordination (IMC)                    | PAP/RAC   |
| Integrated Management Plan (IMP) for Damour according to IMF methodology | PAP/RAC, Plan Bleu, GWP-Med, UNESCO-IHP                                     |
| Training on ICZM and MSP   | PAP/RAC ( <a href="https://www.medopen.org/">https://www.medopen.org/</a> ) |
| Awareness raising activities   | PAP/RAC with input from other partners                                      |



# Thank you!



**Mediterranean  
Action Plan**  
Barcelona  
Convention

