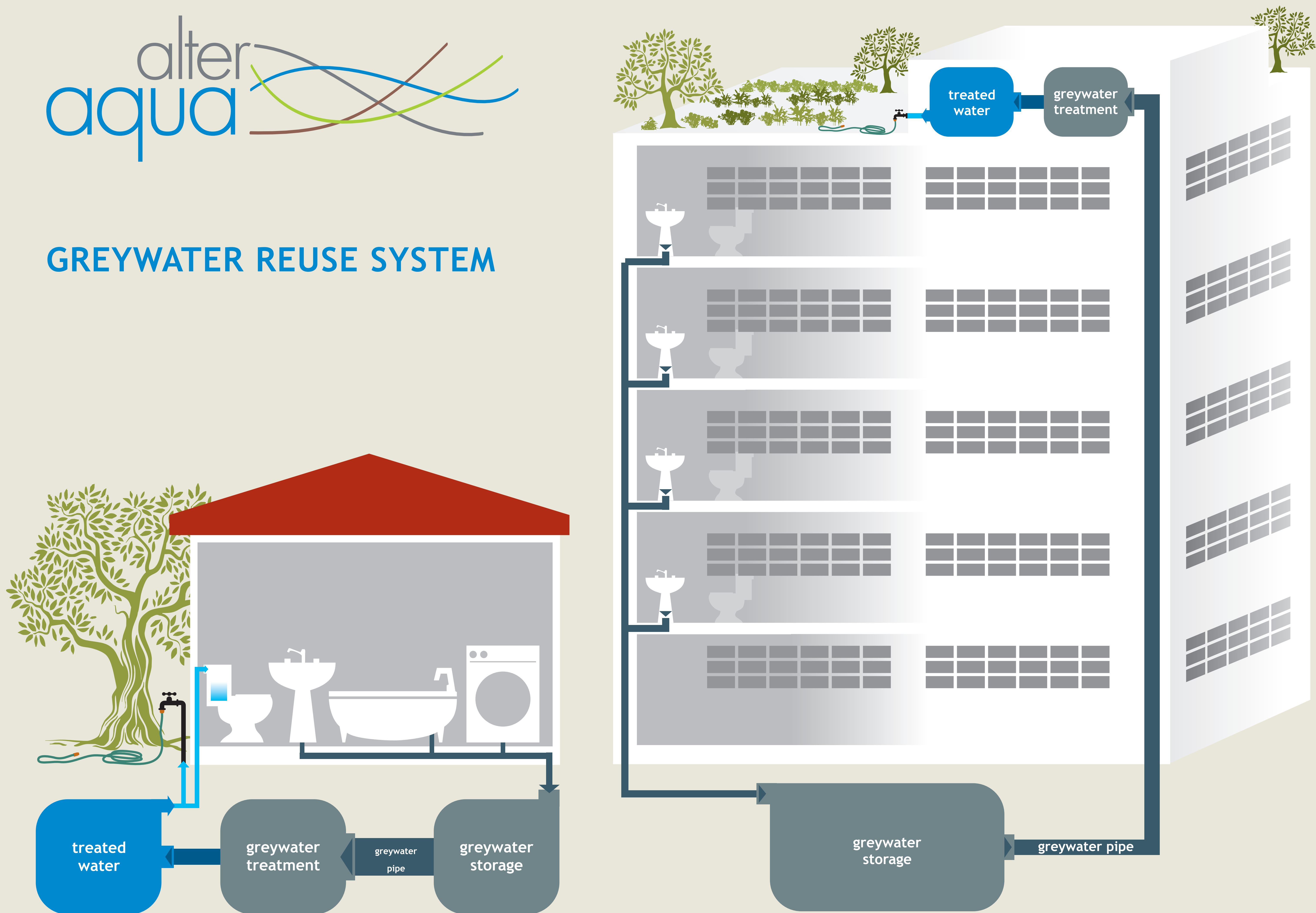




GREYWATER REUSE SYSTEM



Greywater is defined as wastewater generated from showers, wash basins, washing machines, and partly from kitchen appliances and sinks.

When applied in school premises and other public spaces, excess water running from taps could also be collected and treated as greywater in the system.

Greywater is initially pumped through special pipes to a storage reservoir. It is treated in a second reservoir, and is then ready to be reused for garden irrigation, toilet flushing, and car washing.