

**Regional Workshop on Transboundary Water Cooperation
in the context of the SDGs in South Asia and beyond**

**Facilitating Transboundary Water Cooperation in South Asia:
*A Case Study of Kabul River Basin (KRB)***

Bilal Khalid

23rd May, 2017



Introduction to KRB

Precedent on Water Sharing

Case for Benefit Sharing

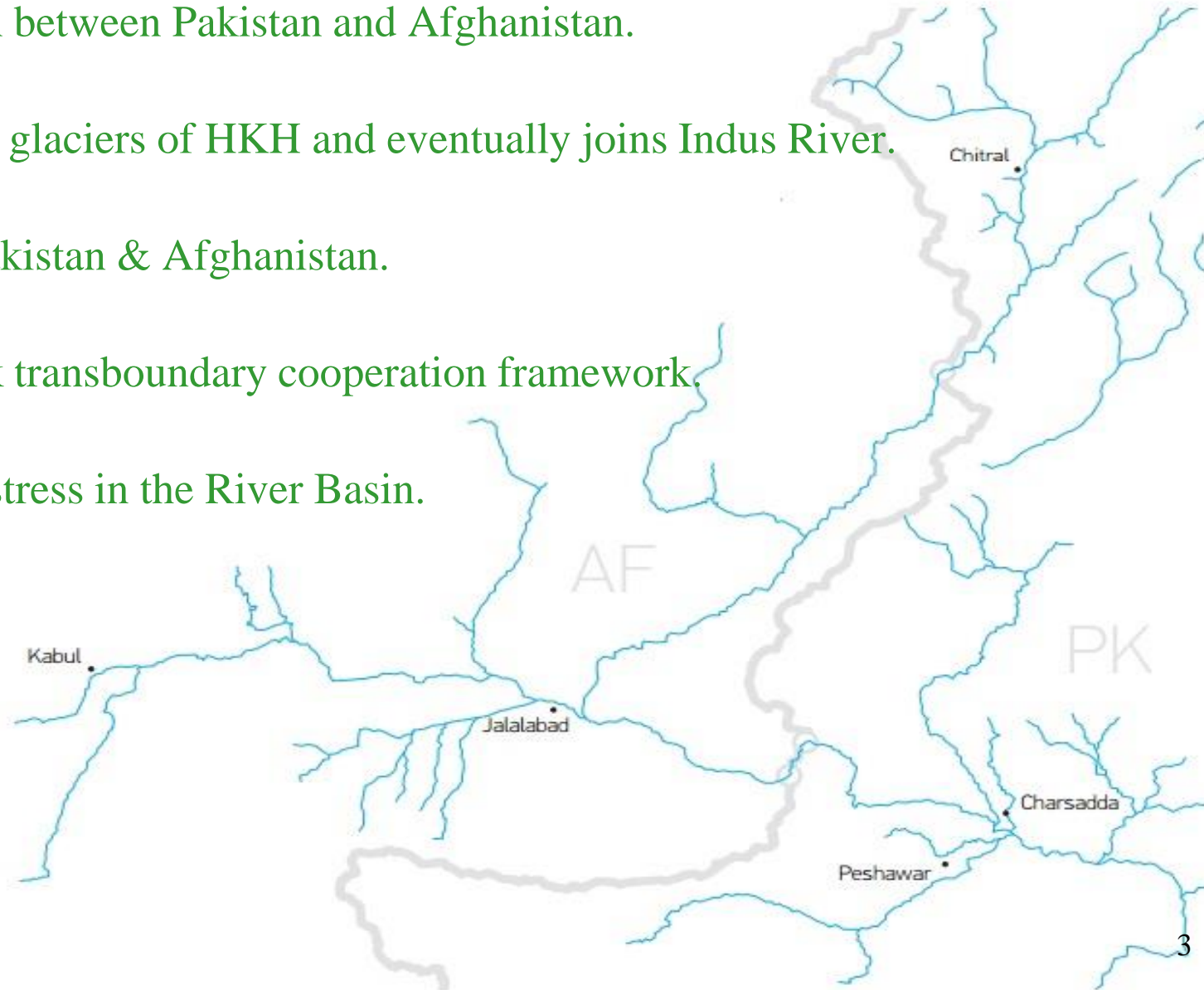
Enabling Transboundary Cooperation

Challenges

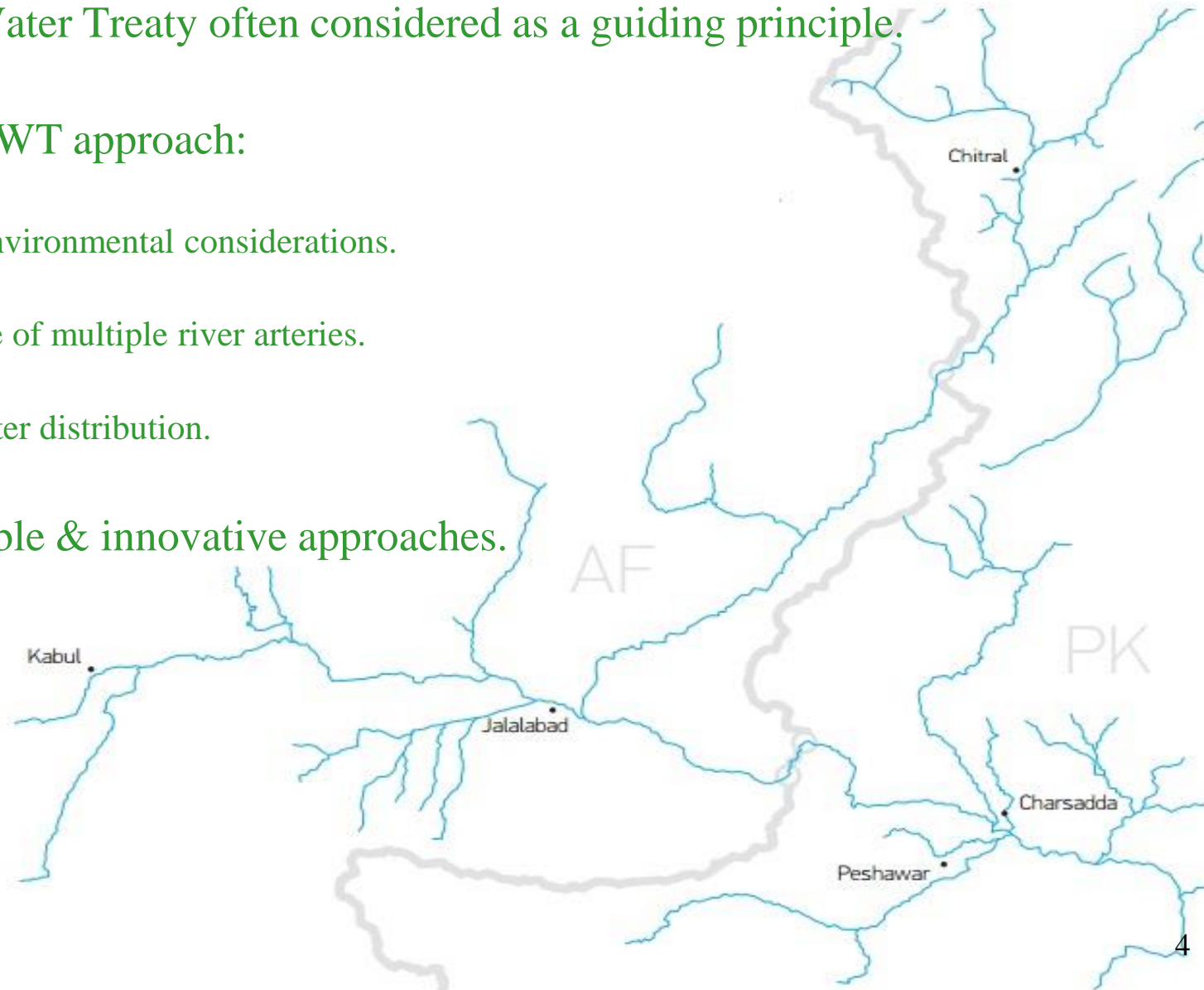


Introduction to Kabul River Basin

- Shared river basin between Pakistan and Afghanistan.
- Emerges from the glaciers of HKH and eventually joins Indus River.
- Importance for Pakistan & Afghanistan.
- No formal Af-Pak transboundary cooperation framework.
- Increasing water stress in the River Basin.

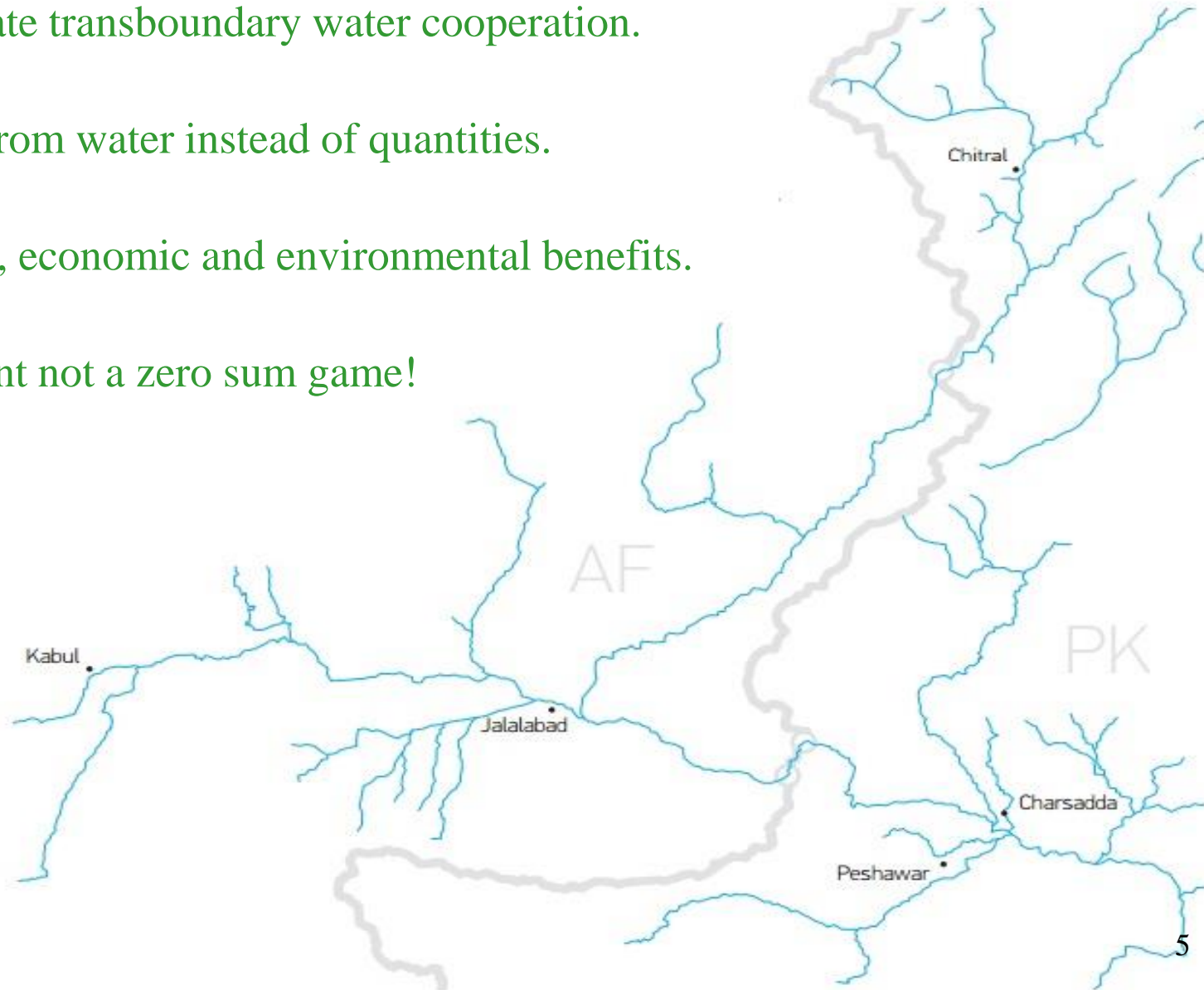


- Indo-Pak Indus Water Treaty often considered as a guiding principle.
- Challenges with IWT approach:
 - i. Downstream environmental considerations.
 - ii. Suitable in case of multiple river arteries.
 - iii. Focused on water distribution.
- Need for sustainable & innovative approaches.

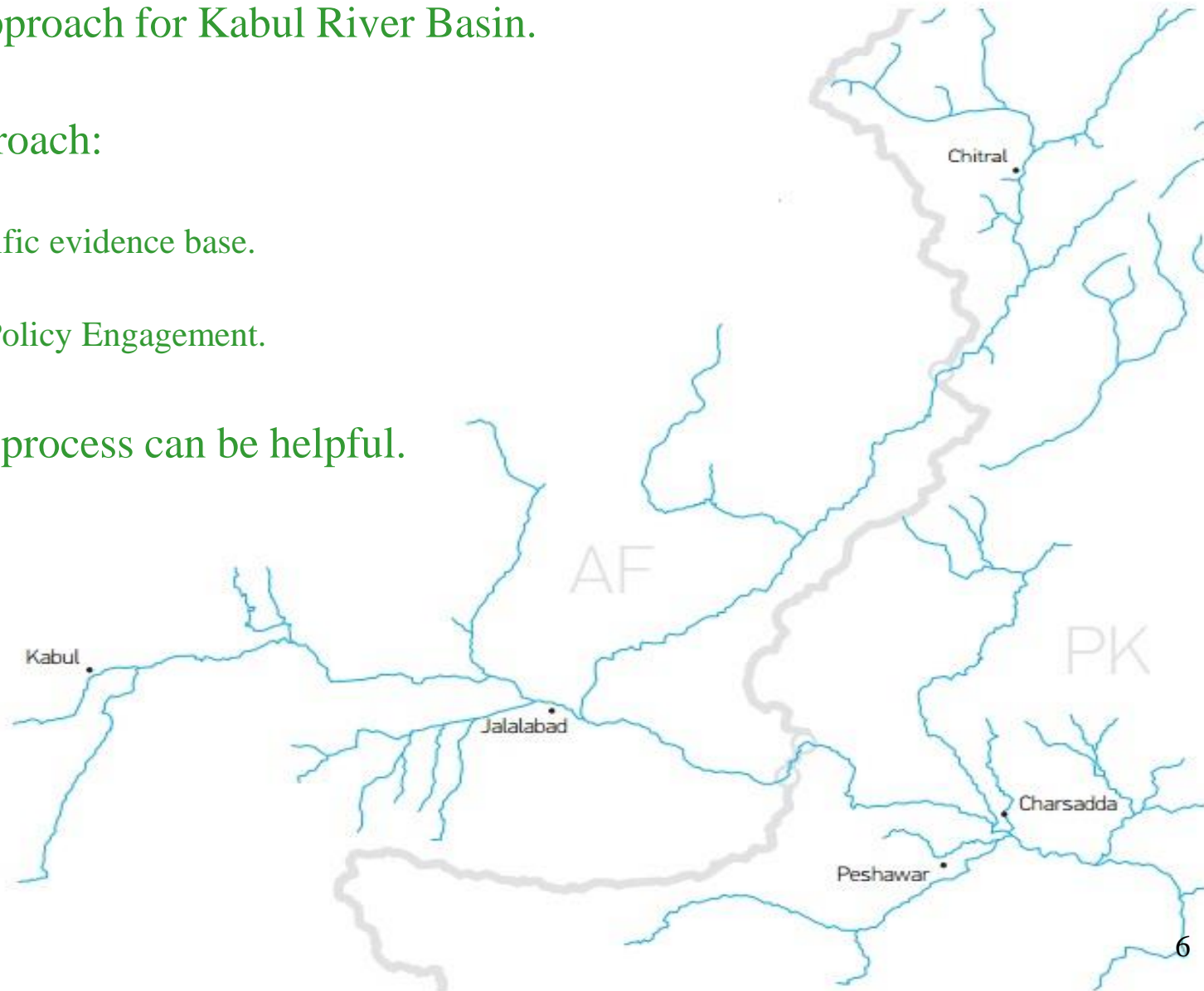


Concept of Benefit Sharing

- Strategy to facilitate transboundary water cooperation.
- Sharing benefits from water instead of quantities.
- Focused on social, economic and environmental benefits.
- Water development not a zero sum game!



- Benefit sharing approach for Kabul River Basin.
- Two pronged approach:
 - i. Credible scientific evidence base.
 - ii. Strong Public Policy Engagement.
- Track-II dialogue process can be helpful.



- Objectives:
 - i. Develop a case for cooperative benefit sharing regime for Kabul River Basin based on robust scientific and social analysis.
 - ii. Strengthen linkages among cross border stakeholders of Kabul River Basin to build trust and confidence for cooperative water resource management.
 - iii. Capacity building and sensitization of local stakeholders for an optimized water resources management framework for Kabul River Basin.



Project Partners

Donor



Pakistan

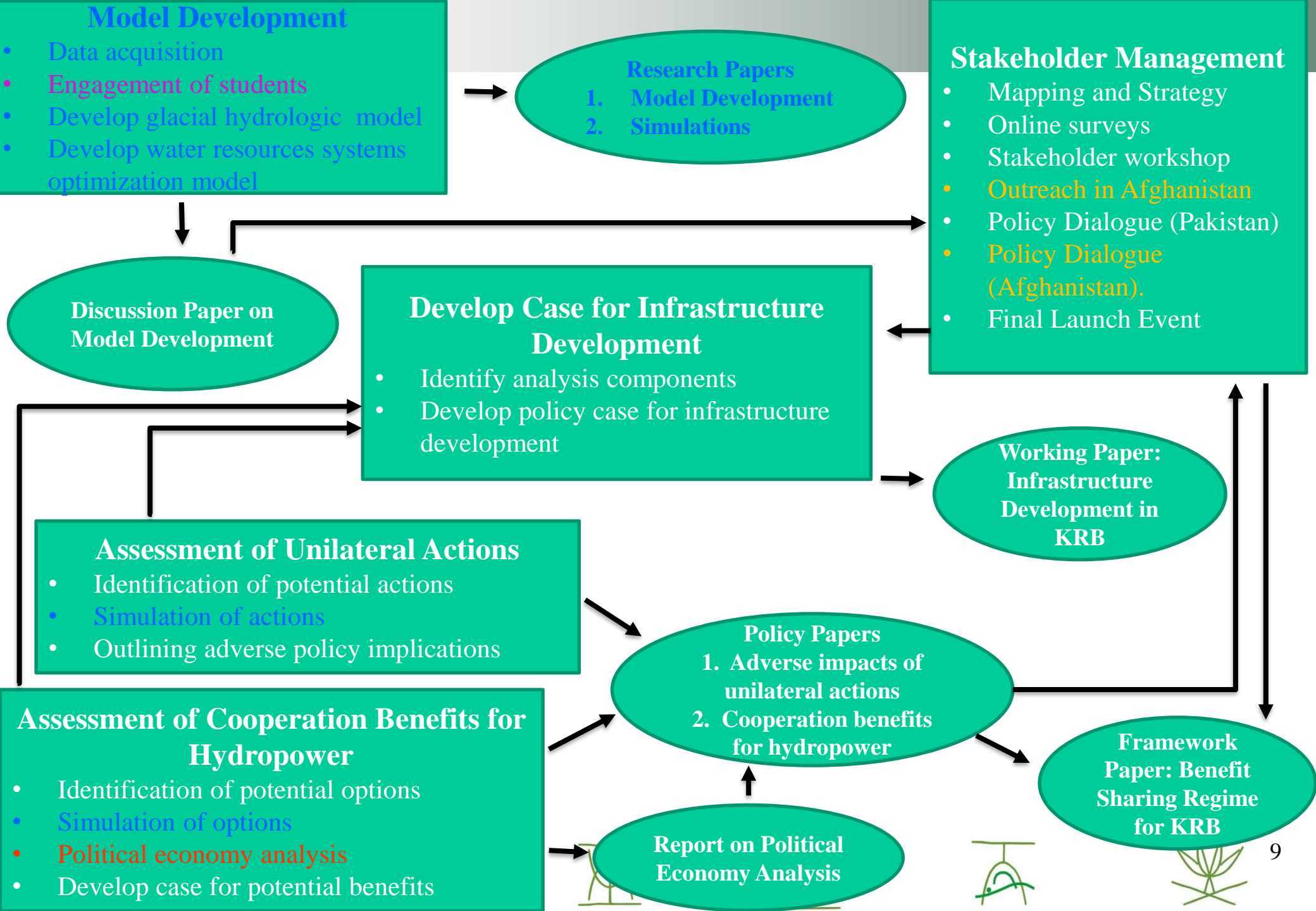


Afghanistan



USG-Supported partners





- Data access & availability.
- Need for independent credible local research institutes.
- Logistical challenges for transboundary exchanges.



*Only a crisis—actual or perceived—produces real change. When that crisis occurs, the actions that are taken depend on the ideas that are lying around. . . . Our basic function [is] to develop alternatives to existing policies, to keep them alive and available until the politically impossible - **Milton Friedman***



